



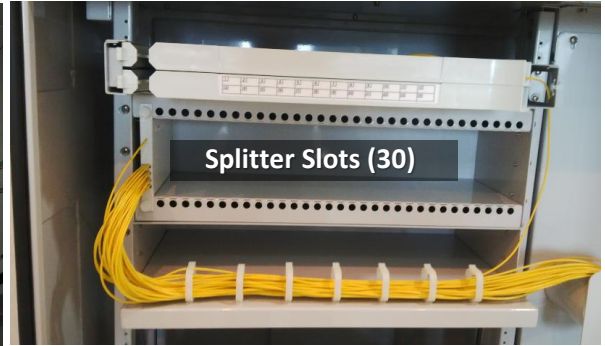
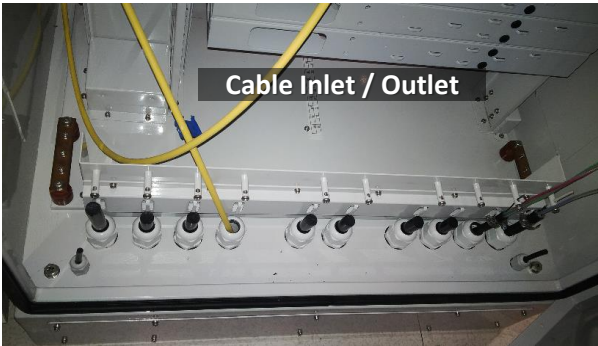
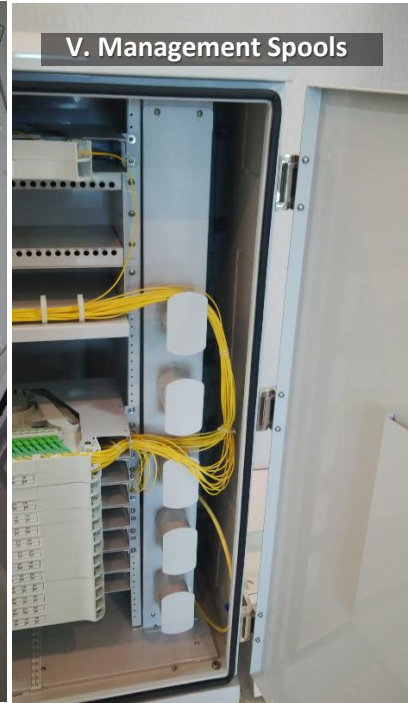
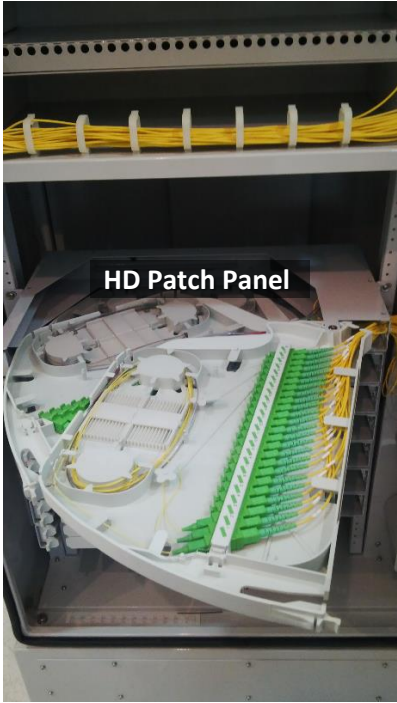
## Description

*DME PROLINK's* High-density Fiber Distribution Hub (HD-FDH) is specifically designed for OSP deployment in an FTTH architecture. This HD-FDH is designed to accommodate HD-Patch Panels as well as the associated Splitter and/or WDM modular components. *DME PROLINK's* HD-FDH can accommodate up to 12 Nos. of High Density Patch Panel which can take 576 D-side (Output) and 96 E-side (Input) termination alongside 30 Nos. of Passive Splitter modules. This closure can be customized to any FTTH requirement and has been developed in conjunction with leading Service Providers.

## Features & Benefits

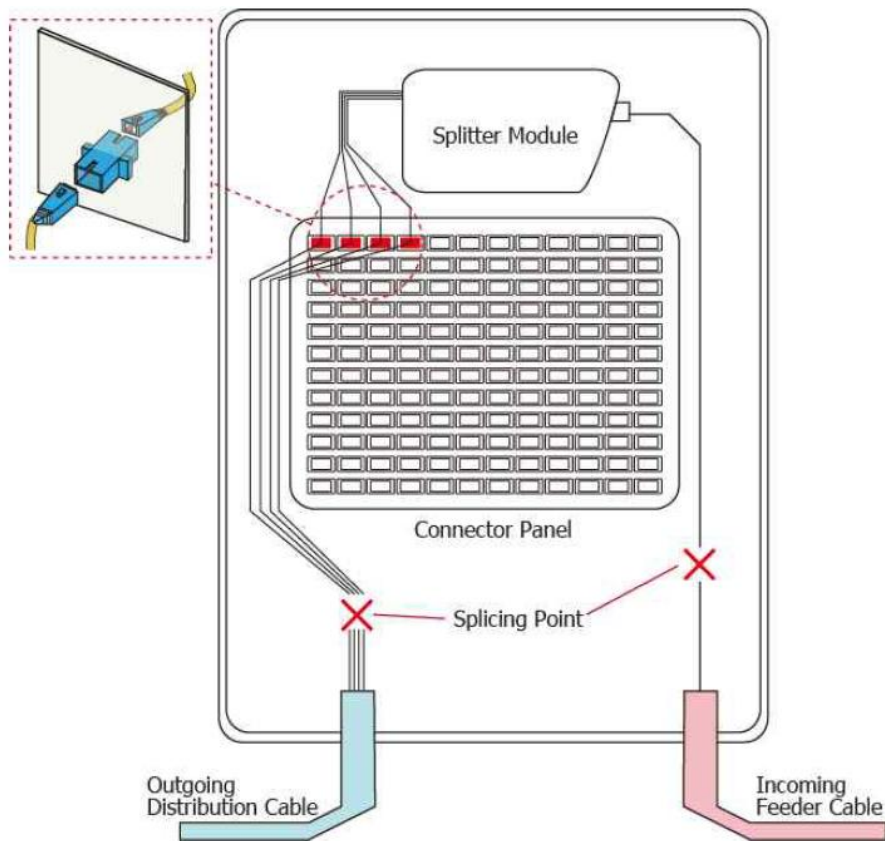
- Offers maximum capacity of 576 fiber Terminations fully-loaded on SC/APC
- Accepts *DME PROLINK's* compliant HD Patch Panels (1U) and Splitter Modules (Ordered separately).
- IP67 Environment Compliant.
- Accommodates Splicing and/or Direct Termination
- Integrated slack-storage
- Rugged construction suitable for OSP installation.
- Inactive Patching Parking Lot for Future expansions.
- Easy to install and terminate.
- Bend radius protection
- Intuitive cable routing
- Easy fiber/connector access
- Rear access for cable routing





## Dimension and Configuration

Dimension (HxWxD) in mm	1530 x 800 x 600
Mounting Option	Floor
Cable Entry Capacity - Inlet	4
Cable Entry Capacity - Outlet	8
Cable Dia. (in mm)	20
Splitter Module Slot Capacity	Max. 30
Splitter Module Options	x:8, x:16, x:32 (where 'x' is 1 or 2)
No. of 48 Port HD Patch Panels (1U)	-40°C to +70°C
Maximum Splice Capacity	576C



### Part Number

D1541-FDH576

High Density Fiber Distribution Hub (FDH), Body only Capacity 576C