

Description

DME PROLINK's Pre-connectorized Fiber Optic cables are best fit solution for Data Centers, FTTx applications where performance, scalability and flexibility are critical. All are custom configured. The advantage about this product is reduced installation time, increased density and guaranteed performance.

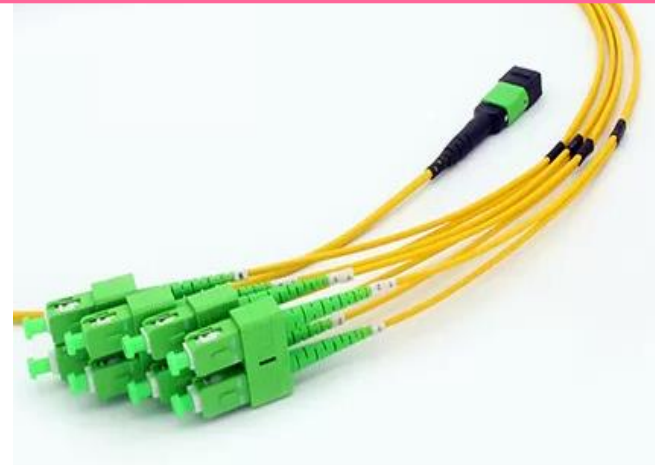
The solution provides an optical channel that is guaranteed to be compliant with ANSI/TIA-568.3-D Standard. DME PROLINK quality personals ensures product reliability through rigorous qualification testing to assure cable performance and durability in adverse field environments. Excellent quality control is achieved through intense in-house quality check and stringent audit acceptance by ISO 9001.

Features & Benefits

- Made using High quality Premium connectors
- Single mode OS2
- G.657A2 Fiber
- Low loss MPO, SC/APC and LC/APC Connectors
- Factory Terminated and tested
- Lifespan of 30 Years
- Standards Compliance: TIA/EIA-568.3-D, Telcordia GR-409-CORE, IEC 61754-7, TIA/EIA 604 (FOCIS)
- UV-Resistant
- RoHS Compliant
- 25 Years System Warranty

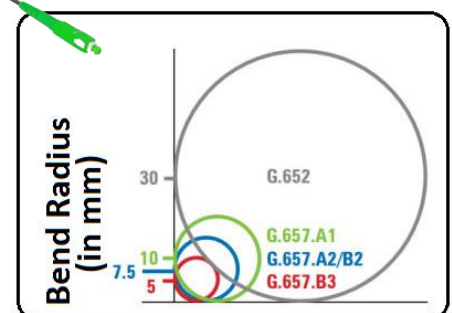
Technical Specification

Fiber Count	1F 2F 4F 8F 16F
FO Cable Structure	Flat or Round
Fiber Mode	Single mode: OS2 9/125µm
Connector Type	MPO Male Connector SC/APC & LC/APC Connector
Cable Jacket Ratings	Low Smoke Zero Halogen (LSZH)
Fanout Length Dia	0.5 Meters 2.0mm
Strength Member	Steel Wire or FRP
Jacket Color	Black
Type	Indoor/Outdoor
End A Connector Type	n x SC/APC or n x LC/APC or MPO Connector
End B Connector Type	n x SC/APC or n x LC/APC or Open End



The Fiber within Pre-connectorized FO cable are designed, Manufactured and tested according to below standards:

- IEC 60793-1: Optical Fiber Part 1: Generic Specification
- IEC 60793-2: Optical Fiber Part 2: Product Specification
- IEC 60794-2: Optical Fiber Cables Part 2 Indoor cables- Sectional Specification
- ITU-T G650: Definition and test methods for the relevant parameters of single-mode fibers
- ITU-T G.655: Characteristics of a non-zero dispersion-shifted single-mode optical fiber and cable
- ITU-T G.657: Characteristics of a bending-loss insensitive single-mode optical fiber

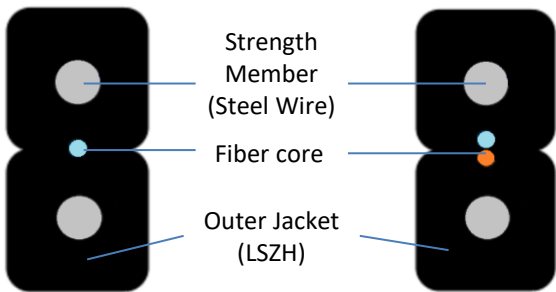


Optical Fiber G.657A2 Specification

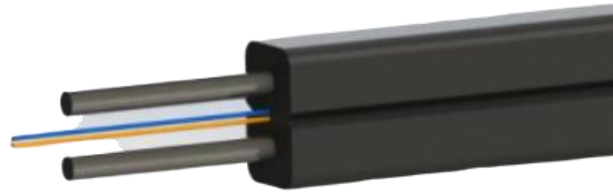
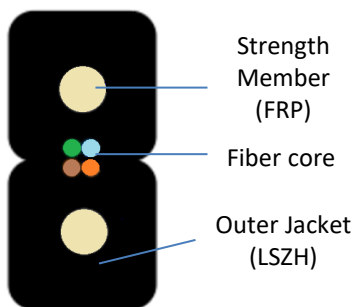
Category	Description	Before Cabling	After Cabling
Optical Specifications	Attenuation @1310 nm	≤0.34 dB/km	≤0.40 dB/km
	Attenuation @1550 nm	≤0.21 dB/km	≤0.30 dB/km
	Cable Cutoff Wavelength (λ_{cc})		≤1260 nm
	Macro-bend loss (100 turns, 50mm radius) @ 1550nm		≤ 0.05 dB
	@ 1625nm		≤ 0.10 dB
	Maximum Chromic Dispersion:		3.5 ps/km/nm @1310nm 18.0 ps/km/nm @1550nm
	Mode Field Diameter @1310 nm		8.6 ± 0.4μm
Dimensional Specifications	Cladding Diameter		125 ±0.7μm
	Cladding non circularity		≤1.0%
	Coating diameter		245 ± 5μm
	Coating non circularity		≤ 6%
	Core/clad concentricity error		≤0.5μm
Mechanical Specifications	Proof stress Level		≥ 100 Kpsi

FO Cable Construction Details

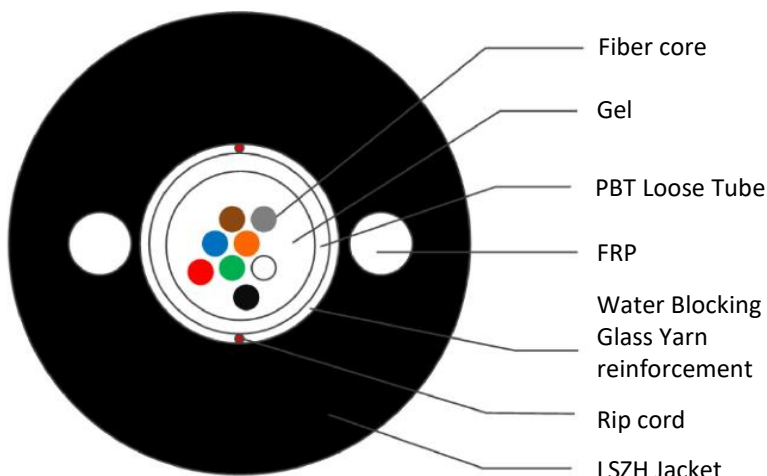
1F / 2F – Flat Drop FO Cable



4F Flat Drop FO Cable



8F/16F Round FO Cable



Characteristics of Flat Drop FO Cable (used for Pre-connectorization)

Physical	Fiber count	1 core G.657A2	2 core G.657A2	4 core G.657A2
	Strength member Material	Steel Wire	Steel Wire	FRP
	Cable OD	(2.0*3.1mm) ± 5%		
	Cable weight	Approx. 10 kg/km ± 15%		
	Fiber Color	Blue	Blue, Orange	Nature, Blue, Orange, Green,
Mechanical	Max. tensile load	500N		
	Crush resistance (Short Term)	1000N/100mm		
	Dynamic bending radius	30mm		
	Static bending radius	15mm		
	Operation temperature range	-30°C to + 70°C		
Environmental Specification	Installation temperature range	-10°C to + 70°C		
	Transport and storage temperature range	-20°C to + 60°C		
Cable Attenuation		≤ 0.4dB/km @ 1310nm, ≤ 0.3dB/km @ 1550nm		

Characteristics of Round FO Cable (used for Pre-connectorization)

Physical	Fiber count	8 core G.657A2	16 core G.657A2
	Strength member Material	FRP	FRP
	Cable OD	6.8mm ± 5% (Sheath: 2.0mm)	
	Nominal Cable weight	Approx. 40 kg/km ± 15%	
Mechanical	Max. tensile load	500N	
	Crush resistance (Short Term)	1000N/100mm	
	Dynamic bending radius	20 x OD	
	Static bending radius	10 x OD	
Environmental Specification	Operation temperature range	-30°C to + 70°C	
	Installation temperature range	-10°C to + 70°C	
	Transport and storage temperature range	-20°C to + 60°C	
Cable Attenuation		≤ 0.4dB/km @ 1310nm, ≤ 0.3dB/km @ 1550nm	

Color code scheme: According to TIA-598-C

Fiber No.	1	2	3	4	5	6	7	8	9	10	11	12
Fiber color	Blue	Orange	Green	Brown	Gray	White	Red	Black	Yellow	Violet	Pink	Aqua
Fiber No.	13	14	15	16								
Fiber color	Blue S100	Orange S100	Green S100	Brown S100								

“S100” means black rings with interval of 100mm

Color Codes

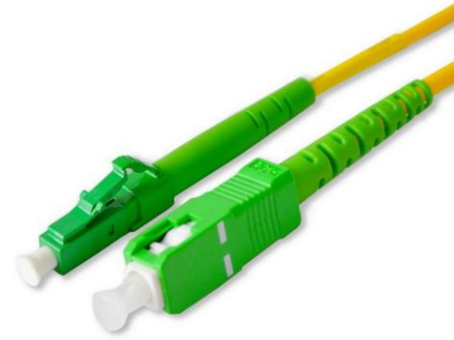
Connectors	MPO	SC/APC	LC/APC
Connectors	OS2: Green/Black	Green	Green
Boots	4/8/16/ Fibers: Black	Green	Green

Technical Characteristics of Connectors

Fiber Type	Single mode	Single mode
Connector Type	SC	LC
Connector Surface	APC	APC
Insertion Loss (dB)	≤ 0.3	≤ 0.3
Return Loss (dB)	≥ 65	≥ 65
Operating Temperature Range	-40°C to +75°C	
Durability	>500 times	> 500 times
Standard	IEC 601754-4	IEC 601754-20

The connector within FO Patch cord are designed, Manufactured and tested according to below standards:

- IEC 61300-1: Basic Test and Measurement procedures – Visual Examination
- IEC 61754: Fiber Optic Connector Interfaces – SC, LC
- IEC 61300-3-6: Basic Test and Measurement procedures - Examinations and Measurements - Return loss
- IEC 61300-3-34: Basic Test and Measurement procedures - Examinations and Measurements - Attenuation of random mated connectors



SC/APC and LC/APC Connectors



MPO Connector for 4 core / 8 Core FO Cables



MPO Connector for 16 core FO Cables

Part Number
Pre-connectorized FO Cables (Both Ends with SC/APC Connectors)

D206-1F50SCA2LSBK	DME Pre-connectorized 1F Flat Drop FO Cable, G657A2, Steel (SM) - 50 meters, both ends with 1 x SC/APC Connector, LSZH, Black Jacket
D206-1F100SCA2LSBK	DME Pre-connectorized 1F Flat Drop FO Cable, G657A2, Steel (SM) - 100 meters, both ends with 1 x SC/APC Connector, LSZH, Black Jacket
D206-1F150SCA2LSBK	DME Pre-connectorized 1F Flat Drop FO Cable, G657A2, Steel (SM) - 150 meters, both ends with 1 x SC/APC Connector, LSZH, Black Jacket
D206-1F200SCA2LSBK	DME Pre-connectorized 1F Flat Drop FO Cable, G657A2, Steel (SM) - 200 meters, both ends with 1 x SC/APC Connector, LSZH, Black Jacket
D206-2F50SCA2LSBK	DME Pre-connectorized 2F Flat Drop FO Cable, G657A2, Steel (SM) - 50 meters, both ends with 2 x SC/APC Fanout (0.5m/2.0mm) LSZH, Black Jacket
D206-2F100SCA2LSBK	DME Pre-connectorized 2F Flat Drop FO Cable, G657A2, Steel (SM) - 100 meters, both ends with 2 x SC/APC Fanout (0.5m/2.0mm) LSZH, Black Jacket
D206-2F150SCA2LSBK	DME Pre-connectorized 2F Flat Drop FO Cable, G657A2, Steel (SM) - 150 meters, both ends with 2 x SC/APC Fanout (0.5m/2.0mm) LSZH, Black Jacket
D206-2F200SCA2LSBK	DME Pre-connectorized 2F Flat Drop FO Cable, G657A2, Steel (SM) - 200 meters, both ends with 2 x SC/APC Fanout (0.5m/2.0mm) LSZH, Black Jacket
D205-8F50SCA2LSBK	DME Pre-connectorized 8F Round FO Cable, G657A2, FRP (SM) - 50 meters, both ends with 8 x SC/APC Fanout (0.5m/2.0mm) LSZH, Black Jacket
D205-8F100SCA2LSBK	DME Pre-connectorized 8F Round FO Cable, G657A2, FRP (SM) - 100 meters, both ends with 8 x SC/APC Fanout (0.5m/2.0mm) LSZH, Black Jacket
D205-8F150SCA2LSBK	DME Pre-connectorized 8F Round FO Cable, G657A2, FRP (SM) - 150 meters, both ends with 8 x SC/APC Fanout (0.5m/2.0mm) LSZH, Black Jacket
D205-8F200SCA2LSBK	DME Pre-connectorized 8F Round FO Cable, G657A2, FRP (SM) - 200 meters, both ends with 8 x SC/APC Fanout (0.5m/2.0mm) LSZH, Black Jacket
D205-16F50SCA2LSBK	DME Pre-connectorized 16F Round FO Cable, G657A2, FRP (SM) – 50 meters, both ends with 16 x SC/APC Fanout (0.5m/2.0mm) LSZH, Black Jacket
D205-16F100SCA2LSBK	DME Pre-connectorized 16F Round FO Cable, G657A2, FRP (SM) – 100 meters, both ends with 16 x SC/APC Fanout (0.5m/2.0mm) LSZH, Black Jacket
D205-16F150SCA2LSBK	DME Pre-connectorized 16F Round FO Cable, G657A2, FRP (SM) – 150 meters, both ends with 16 x SC/APC Fanout (0.5m/2.0mm) LSZH, Black Jacket
D205-16F200SCA2LSBK	DME Pre-connectorized 16F Round FO Cable, G657A2, FRP (SM) – 200 meters, both ends with 16 x SC/APC Fanout (0.5m/2.0mm) LSZH, Black Jacket

Part Number
Pre-connectorized FO Cables (One End with SC/APC Connectors and other end open)

D206-1F50SCA1LSBK	DME Pre-connectorized 1F Flat Drop FO Cable, G657A2, Steel (SM) - 50 meters, One end with 1 x SC/APC Connector and other end open, LSZH, Black Jacket
D206-1F100SCA1LSBK	DME Pre-connectorized 1F Flat Drop FO Cable, G657A2, Steel (SM) - 100 meters, One end with 1 x SC/APC Connector and other end open, LSZH, Black Jacket
D206-1F150SCA1LSBK	DME Pre-connectorized 1F Flat Drop FO Cable, G657A2, Steel (SM) - 150 meters, One end with 1 x SC/APC Connector and other end open, LSZH, Black Jacket
D206-1F200SCA1LSBK	DME Pre-connectorized 1F Flat Drop FO Cable, G657A2, Steel (SM) - 200 meters, One end with 1 x SC/APC Connector and other end open, LSZH, Black Jacket
D206-2F50SCA1LSBK	DME Pre-connectorized 2F Flat Drop FO Cable, G657A2, Steel (SM) - 50 meters, One end with 2 x SC/APC Connector Fanout (0.5m/2.0mm) and other end open, LSZH, Black Jacket
D206-2F100SCA1LSBK	DME Pre-connectorized 2F Flat Drop FO Cable, G657A2, Steel (SM) - 100 meters, One end with 2 x SC/APC Connector Fanout (0.5m/2.0mm) and other end open, LSZH, Black Jacket
D206-2F150SCA1LSBK	DME Pre-connectorized 2F Flat Drop FO Cable, G657A2, Steel (SM) - 150 meters, One end with 2 x SC/APC Connector Fanout (0.5m/2.0mm) and other end open, LSZH, Black Jacket
D206-2F200SCA1LSBK	DME Pre-connectorized 2F Flat Drop FO Cable, G657A2, Steel (SM) - 200 meters, One end with 2 x SC/APC Connector Fanout (0.5m/2.0mm) and other end open, LSZH, Black Jacket
D205-8F50SCA1LSBK	DME Pre-connectorized 8F Round FO Cable, G657A2, FRP (SM) - 50 meters, One end with 8 x SC/APC Fanout (0.5m/2.0mm) and other end open, LSZH, Black Jacket
D205-8F100SCA1LSBK	DME Pre-connectorized 8F Round FO Cable, G657A2, FRP (SM) - 100 meters, One end with 8 x SC/APC Fanout (0.5m/2.0mm) and other end open, LSZH, Black Jacket
D205-8F150SCA1LSBK	DME Pre-connectorized 8F Round FO Cable, G657A2, FRP (SM) - 150 meters, One end with 8 x SC/APC Fanout (0.5m/2.0mm) and other end open, LSZH, Black Jacket
D205-8F200SCA1LSBK	DME Pre-connectorized 8F Round FO Cable, G657A2, FRP (SM) - 200 meters, One end with 8 x SC/APC Fanout (0.5m/2.0mm) and other end open, LSZH, Black Jacket
D205-16F50SCA1LSBK	DME Pre-connectorized 16F Round FO Cable, G657A2, FRP (SM) - 50 meters, One end with 16 x SC/APC Fanout (0.5m/2.0mm) and other end open, LSZH, Black Jacket
D205-16F100SCA1LSBK	DME Pre-connectorized 16F Round FO Cable, G657A2, FRP (SM) - 100 meters, One end with 16 x SC/APC Fanout (0.5m/2.0mm) and other end open, LSZH, Black Jacket
D205-16F150SCA1LSBK	DME Pre-connectorized 16F Round FO Cable, G657A2, FRP (SM) - 150 meters, One end with 16 x SC/APC Fanout (0.5m/2.0mm) and other end open, LSZH, Black Jacket
D205-16F200SCA1LSBK	DME Pre-connectorized 16F Round FO Cable, G657A2, FRP (SM) - 200 meters, One end with 16 x SC/APC Fanout (0.5m/2.0mm) and other end open, LSZH, Black Jacket

Part Number

Pre-connectorized FO Cables (One End with 4 SC/APC Connectors & Other End with 2 SC/APC & 2LC/APC Connectors)

D204-4F50DUT1LSBK	DME Pre-connectorized 4F Flat Drop FO Cable, G657A2, FRP (SM) - 50 meters, One end with 4 x SC/APC connectors and other end with 2 x SC/APC and 2 x LC/APC Connector Fanout (0.5m/2.0mm) LSZH, Black Jacket
D204-4F100DUT1LSBK	DME Pre-connectorized 4F Flat Drop FO Cable, G657A2, FRP (SM) - 100 meters, One end with 4 x SC/APC connectors and other end with 2 x SC/APC and 2 x LC/APC Connector Fanout (0.5m/2.0mm) LSZH, Black Jacket
D204-4F150DUT1LSBK	DME Pre-connectorized 4F Flat Drop FO Cable, G657A2, FRP (SM) - 150 meters, One end with 4 x SC/APC connectors and other end with 2 x SC/APC and 2 x LC/APC Connector Fanout (0.5m/2.0mm) LSZH, Black Jacket
D204-4F200DUT1LSBK	DME Pre-connectorized 4F Flat Drop FO Cable, G657A2, FRP (SM) - 200 meters, One end with 4 x SC/APC connectors and other end with 2 x SC/APC and 2 x LC/APC Connector Fanout (0.5m/2.0mm) LSZH, Black Jacket

Pre-connectorized FO Cables (One End with 2 SC/APC & 2LC/APC Connectors and other end open)

D204-4F50DUT0LSBK	DME Pre-connectorized 4F Flat Drop FO Cable, G657A2, FRP (SM) - 50 meters, One end with 2 x SC/APC and 2 x LC/APC Connector Fanout (0.5m/2.0mm) and other end open, LSZH, Black Jacket
D204-4F100DUT0LSBK	DME Pre-connectorized 4F Flat Drop FO Cable, G657A2, FRP (SM) - 100 meters, One end with 2 x SC/APC and 2 x LC/APC Connector Fanout (0.5m/2.0mm) and other end open, LSZH, Black Jacket
D204-4F150DUT0LSBK	DME Pre-connectorized 4F Flat Drop FO Cable, G657A2, FRP (SM) - 150 meters, One end with 2 x SC/APC and 2 x LC/APC Connector Fanout (0.5m/2.0mm) and other end open, LSZH, Black Jacket
D204-4F200DUT0LSBK	DME Pre-connectorized 4F Flat Drop FO Cable, G657A2, FRP (SM) - 200 meters, One end with 2 x SC/APC and 2 x LC/APC Connector Fanout (0.5m/2.0mm) and other end open, LSZH, Black Jacket

Pre-connectorized FO Cables (One End with MPO Connector and other end with 2 SC/APC & 2LC/APC Connectors)

D204-4F50MDT1LSBK	DME Pre-connectorized 4F Flat Drop FO Cable, G657A2, FRP (SM) - 50 meters, One end with MPO Connector and other end with 2 x SC/APC and 2 x LC/APC Connector Fanout (0.5m/2.0mm), LSZH, Black Jacket
D204-4F100MDT1LSBK	DME Pre-connectorized 4F Flat Drop FO Cable, G657A2, FRP (SM) - 100 meters, One end with MPO Connector and other end with 2 x SC/APC and 2 x LC/APC Connector Fanout (0.5m/2.0mm), LSZH, Black Jacket
D204-4F150MDT1LSBK	DME Pre-connectorized 4F Flat Drop FO Cable, G657A2, FRP (SM) - 150 meters, One end with MPO Connector and other end with 2 x SC/APC and 2 x LC/APC Connector Fanout (0.5m/2.0mm), LSZH, Black Jacket
D204-4F200MDT1LSBK	DME Pre-connectorized 4F Flat Drop FO Cable, G657A2, FRP (SM) - 200 meters, One end with MPO Connector and other end with 2 x SC/APC and 2 x LC/APC Connector Fanout (0.5m/2.0mm), LSZH, Black Jacket

Part Number

Pre-connectorized FO Cables (One End with MPO Connector and other end with SC/APC Connectors)

D205-8F50MST1LSBK	DME Pre-connectorized 8F Round FO Cable, G657A2, FRP (SM) - 50 meters, One end with MPO connector and other end with 8 x SC/APC Connector Fanout (0.5m/2.0mm) LSZH, Black Jacket
D205-8F100MST1LSBK	DME Pre-connectorized 8F Round FO Cable, G657A2, FRP (SM) - 100 meters, One end with MPO connector and other end with 8 x SC/APC Connector Fanout (0.5m/2.0mm) LSZH, Black Jacket
D205-8F150MST1LSBK	DME Pre-connectorized 8F Round FO Cable, G657A2, FRP (SM) - 150 meters, One end with MPO connector and other end with 8 x SC/APC Connector Fanout (0.5m/2.0mm) LSZH, Black Jacket
D205-8F200MST1LSBK	DME Pre-connectorized 8F Round FO Cable, G657A2, FRP (SM) - 200 meters, One end with MPO connector and other end with 8 x SC/APC Connector Fanout (0.5m/2.0mm) LSZH, Black Jacket
D205-16F50MST1LSBK	DME Pre-connectorized 16F Round FO Cable, G657A2, FRP (SM) - 50 meters, One end with MPO connector and other end with 16 x SC/APC Connector Fanout (0.5m/2.0mm) LSZH, Black Jacket
D205-16F100MST1LSBK	DME Pre-connectorized 16F Round FO Cable, G657A2, FRP (SM) - 100 meters, One end with MPO connector and other end with 16 x SC/APC Connector Fanout (0.5m/2.0mm) LSZH, Black Jacket
D205-16F150MST1LSBK	DME Pre-connectorized 16F Round FO Cable, G657A2, FRP (SM) - 150 meters, One end with MPO connector and other end with 16 x SC/APC Connector Fanout (0.5m/2.0mm) LSZH, Black Jacket
D205-16F200MST1LSBK	DME Pre-connectorized 16F Round FO Cable, G657A2, FRP (SM) - 200 meters, One end with MPO connector and other end with 16 x SC/APC Connector Fanout (0.5m/2.0mm) LSZH, Black Jacket